

### LED Round Panel Light 18W Surface Mounted



#### Technical Specifications

<b>Model Code</b>	0635/01732
<b>Wattage</b>	18W
<b>Lumens</b>	1240 Lm
<b>Efficiency</b>	>68 Lm/W
<b>CRI (Ra)</b>	>80 Ra
<b>UGR</b>	<21 / H0,50
<b>CCT</b>	4000K
<b>Beam Angle</b>	120 Degree
<b>Working Voltage</b>	230V AC ±10%
<b>IP Rating</b>	IP20
<b>Lifetime</b>	>30.000h
<b>Power Factor</b>	>0.9
<b>Overvoltage Protection</b>	2KV
<b>Working Temperature</b>	-25°C - +50°C
<b>Class</b>	II
<b>Weight</b>	0,4 Kg
<b>Flickering Free</b>	< 5%
<b>Warranty</b>	2 Years
<b>Color</b>	White
<b>Dimensions</b>	Φ 225X35mm
<b>Certificates</b>	CE ( EMC – LVD ) ROHS



**BIGSOLAR**

Quick Connector

Λ. Νάτο 100, 19300 Ασπρόπυργος

**Τηλ:** 210 5509090

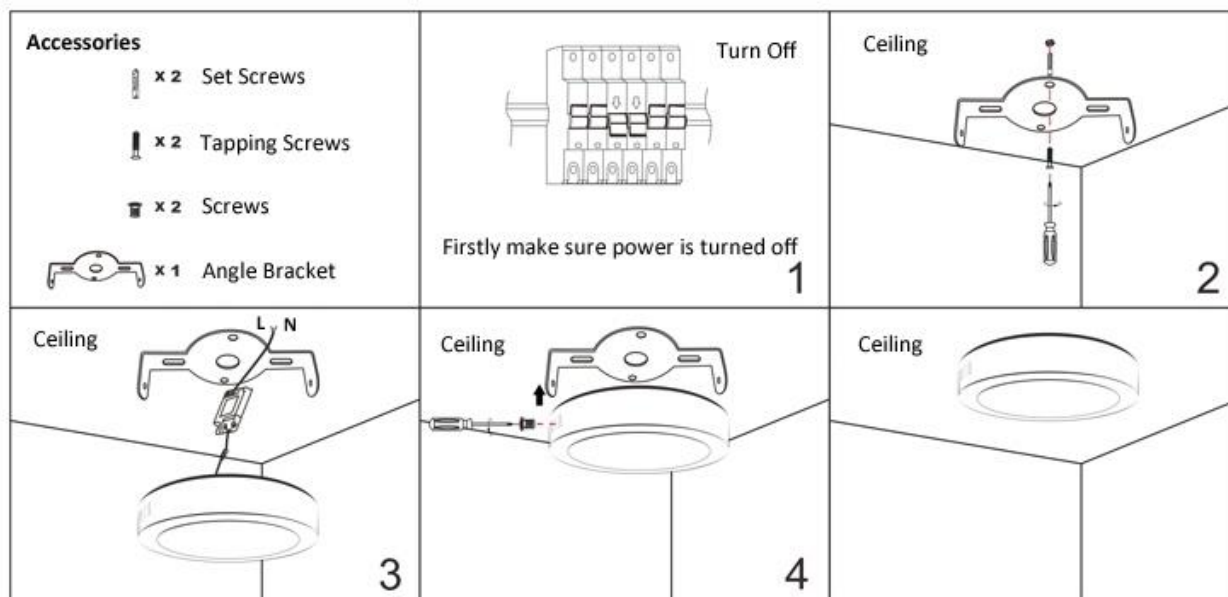
**Fax:** 210 5594559

**E-mail:** [info@bigsolar.gr](mailto:info@bigsolar.gr)

**Web:** [www.bigsolar.gr](http://www.bigsolar.gr)



### User Manual



Μεγάλη **και** στην εξοικονόμηση ενέργειας