



**BIGSOLAR**

Λ. Νάτο 100, 19300 Ασπρόπυργος

**Τηλ:** 210 5509090

**Fax:** 210 5594559

**E-mail:** [info@bigsolar.gr](mailto:info@bigsolar.gr)

**Web:** [www.bigsolar.gr](http://www.bigsolar.gr)

### LED Panel Light 36W



### Technical Specifications

<b>Code</b>	<b>BSL 0635/02688</b>
<b>Wattage</b>	36W
<b>Voltage</b>	220-240V,50Hz
<b>Lumens</b>	4000 Lm
<b>Efficiency</b>	110 Lm/W
<b>Beam Angle</b>	90 Degree
<b>CRI (Ra)</b>	>80 Ra
<b>UGR</b>	<19
<b>CCT</b>	3000K
<b>Beam Angle</b>	90 Degree
<b>Working Voltage</b>	200-240V AC ±10%
<b>IP Rating</b>	IP40
<b>Lifetime</b>	LM80>50.000h
<b>Driver</b>	Dali Boke
<b>Body material</b>	aluminum
<b>Cover/lens material</b>	PS (Polystyrene)/Mitsubishi PMMA
<b>Lifetime Driver</b>	≥50.000h for Tcase65°C
<b>Power Factor</b>	>0.9
<b>Overvoltage Protection</b>	2KV
<b>Working Temperature</b>	-25°C - +50°C
<b>Flickering Free</b>	< 5%
<b>Warranty</b>	5 Years
<b>Color</b>	White
<b>Dimensions</b>	1200X300X28mm
<b>Certificates</b>	CE, ROHS



Μεγάλη **και** στην εξοικονόμηση ενέργειας



**BIGSOLAR**

Λ. Νάτο 100, 19300 Ασπρόπυργος

**Τηλ:** 210 5509090

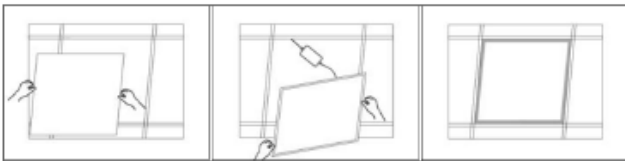
**Fax:** 210 5594559

**E-mail:** [info@bigsolar.gr](mailto:info@bigsolar.gr)

**Web:** [www.bigsolar.gr](http://www.bigsolar.gr)

## Installation

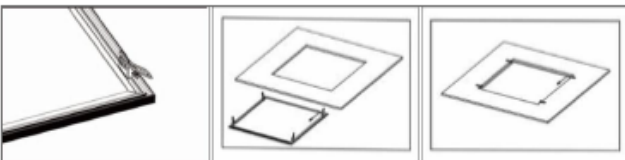
### MODE 1: Recessed Luminaire



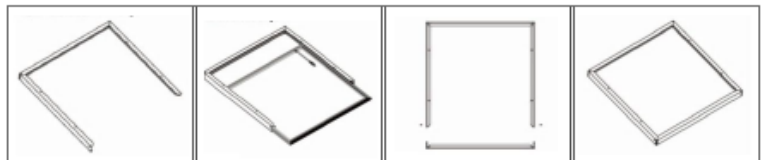
### MODE 2: Hanging Wire



### MODE 3: Spring Fastener



### MODE 4: Ceiling Mounting Frames



**IP40**  
DUST-PROOF



The IP40 grade dustproof sealing design, painstaking design multi layer process tightly, to help you solve the problem of dust accumulation in the shade and flies.

Μεγάλη

Λειτουργίας