



BIGSOLAR

Λ. Νάτο 100, 19300 Ασπρόπυργος

Τηλ: 210 5509090

Fax: 210 5594559

E-mail: info@bigsolar.gr

Web: www.bigsolar.gr

LED Panel Light 20W



Technical Specifications

Code	BSL 0635/02681
Wattage	20W
Voltage	220-240V,50Hz
Lumens	2000 Lm
Efficiency	100 Lm/W
Beam Angle	90 Degree
CRI (Ra)	>80 Ra
UGR	<19
CCT	3000K
Beam Angle	90 Degree
Working Voltage	200-240V AC ±10%
IP Rating	IP40
Lifetime	LM80>50.000h
Driver	Boke
Body material	aluminum
Cover/lens material	PS (Polystyrene)/Mitsubishi PMMA
Lifetime Driver	≥50.000h for Tcase65°C
Power Factor	>0.9
Overvoltage Protection	2KV
Working Temperature	-25°C - +50°C
Flickering Free	< 5%
Warranty	5 Years
Color	White
Dimensions	300X600X28mm
Certificates	CE, ROHS



Μεγάλη **και** στην εξοικονόμηση ενέργειας



BIGSOLAR

Λ. Νάτο 100, 19300 Ασπρόπυργος

Τηλ: 210 5509090

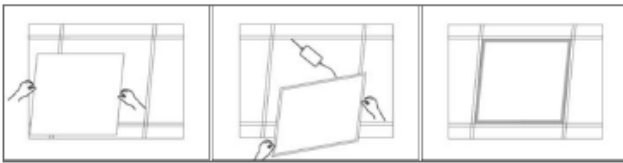
Fax: 210 5594559

E-mail: info@bigsolar.gr

Web: www.bigsolar.gr

Installation

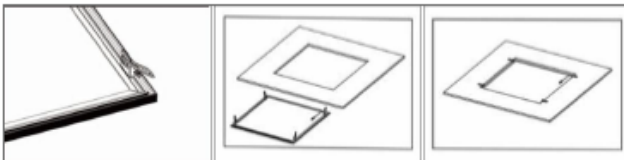
MODE 1: Recessed Luminaire



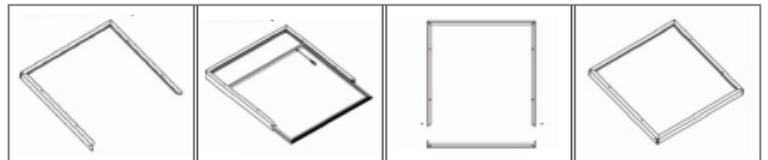
MODE 2: Hanging Wire



MODE 3: Spring Fastener



MODE 4: Ceiling Mounting Frames



The IP40 grade dustproof sealing design, painstaking design multi layer process tightly, to help you solve the problem of dust accumulation in the shade and flies.

Μεγάλη **και** στην εξοικονόμηση ενέργειας