



BIGSOLAR

Λ. Νάτο 100, 19300 Ασπρόπυργος

Τηλ: 210 5509090

Fax: 210 5594559

E-mail: info@bigsolar.gr

Web: www.bigsolar.gr

LED Panel Light 36W



Technical Specifications

Code	BSL 0635/02687
Wattage	36W
Voltage	220-240V,50Hz
Lumens	4000 Lm
Efficiency	110 Lm/W
Beam Angle	90 Degree
CRI (Ra)	>80 Ra
UGR	<19
CCT	3000K
Beam Angle	90 Degree
Working Voltage	200-240V AC ±10%
IP Rating	IP40
Lifetime	LM80>50.000h
Driver	Boke
Body material	aluminum
Cover/lens material	PS (Polystyrene)/Mitsubishi PMMA
Lifetime Driver	≥50.000h for Tcase65°C
Power Factor	>0.9
Overvoltage Protection	2KV
Working Temperature	-25°C - +50°C
Flickering Free	< 5%
Warranty	5 Years
Color	White
Dimensions	1200X300X28mm
Certificates	CE, ROHS



Μεγάλη **και** στην εξοικονόμηση ενέργειας



BIGSOLAR

Λ. Νάτο 100, 19300 Ασπρόπυργος

Τηλ: 210 5509090

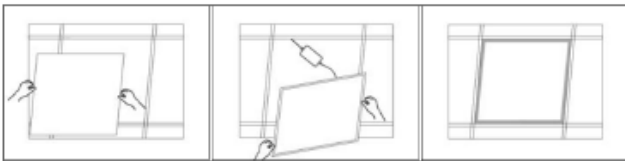
Fax: 210 5594559

E-mail: info@bigsolar.gr

Web: www.bigsolar.gr

Installation

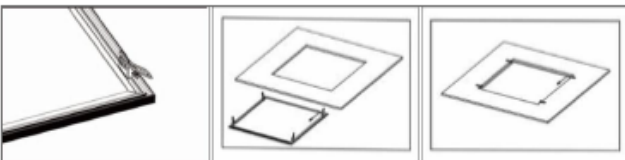
MODE 1: Recessed Luminaire



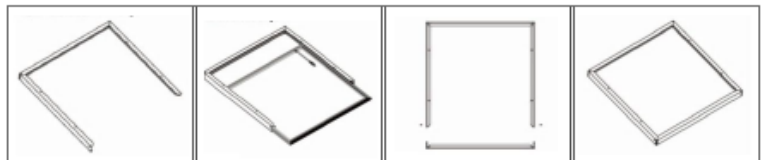
MODE 2: Hanging Wire



MODE 3: Spring Fastener



MODE 4: Ceiling Mounting Frames



The IP40 grade dustproof sealing design, painstaking design multi layer process tightly, to help you solve the problem of dust accumulation in the shade and flies.

Μεγάλη

Λειτουργίας